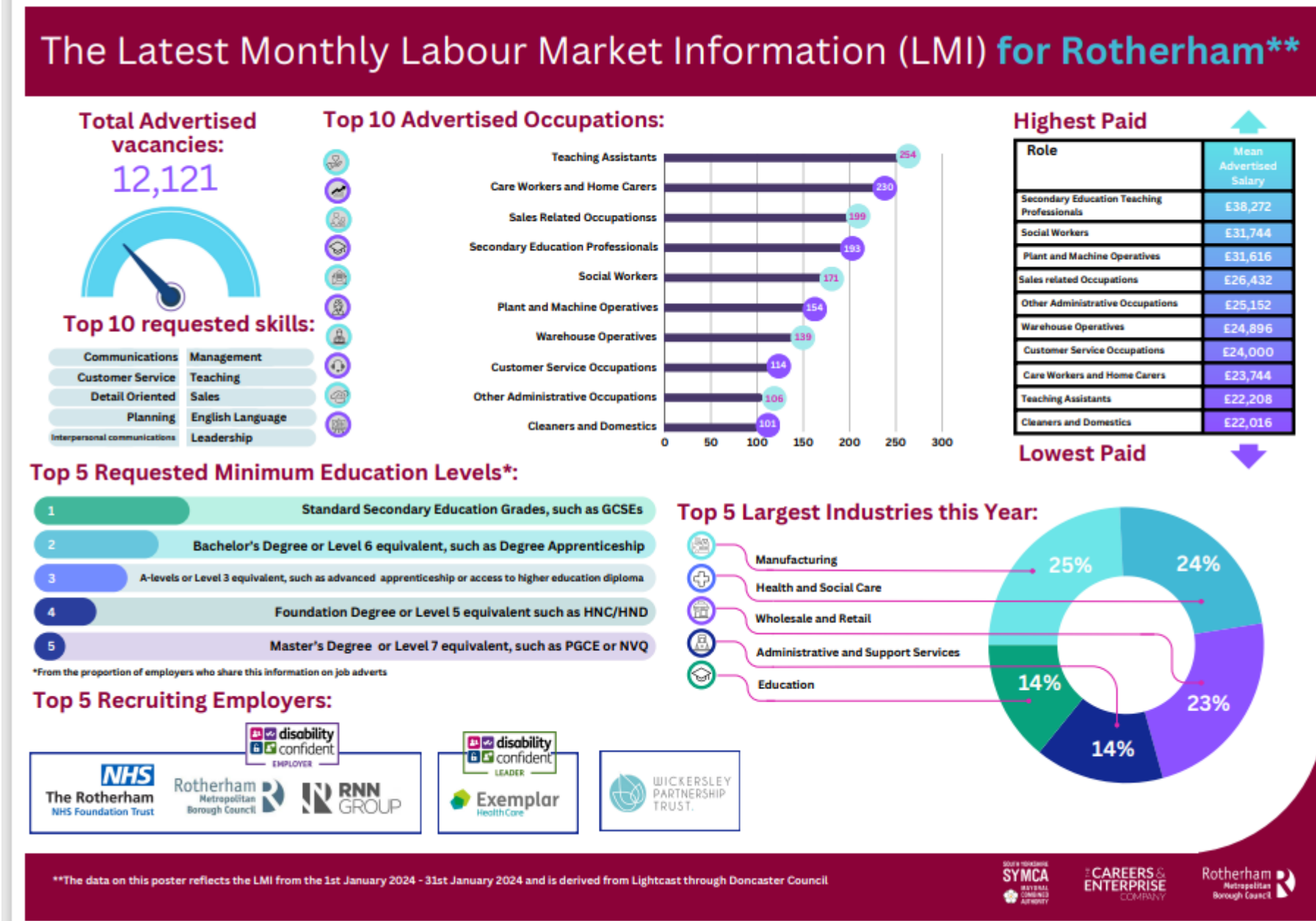


Local Labour Market Information & Careers Links

Below is a recent example of labour market information for Rotherham, provided through the Careers and Education Company (CEC)



Labour Market Information (LMI) overview

This recent data shows that the most popular currently advertised positions in Rotherham include education, social/care work, sales, warehouse work, mechanical/engineering, customer service, administration and cleaning. As a school we are starting to gather data on pupils' interests and possible destinations. This can then be used to match against possible employment destinations to inform future planning for students. We do have students interested in some of these areas, though there are other areas of interest and it will be useful to explore the employment potential in the local and wider area for these areas of interest. Most jobs are requesting GCSE's as a minimum requirement, which means that a number of our pupils will be able to meet this standard and potentially access these jobs. Some companies offer supported internships that some of our pupils have been able to take advantage of and have been successful. Supported internships (employment) offer an alternative route, without the requirement necessarily for GCSE qualifications. More opportunities like this are being sought. The South Yorkshire Apprentice Hub has just been launched in December 2023, and this was attended by the Careers Lead for Newman School. The Hub will offer a one-stop shop for all local apprenticeship information making it easier for apprentices and providers to connect with each other. This will be a useful resource in potentially increasing the number of our pupils considering an apprenticeship route. There are also opportunities for voluntary and community work in the local area for young people that won't necessarily access the traditional jobs market. Information about these opportunities can be found through Rotherham Council via their 'local life' platform, see the **LINKS** section for these websites.

Local education opportunities

Newman School has good links with local colleges and other education providers. Most of our pupils progressing to further education go to Rotherham/Dearne Valley College or Thomas Rotherham College. Some have gone onto the Rotherham Opportunities College (ROC) and some to other colleges (Barnsley) and to specialist provisions such as Landmarks College.

Local colleges offer a range of qualifications from A-level (Level 3) to Level 2 (GCSE equivalent) and Level 1 (for easier access) courses. Many of these also have a practical element depending on the subject. Rotherham Colleges group (RNN) has now expanded its provision to offer T-levels and apprenticeships, Barnsley College has a well-established T-levels programme. There are also 3 University Technical Colleges (UTC's) in the area, 2 in Sheffield and one in Doncaster for 14-19 provision which offer technical qualifications. RNN group and Thomas Rotherham College offer 'FLEX' (Flexible Learning Experience) and additional learning support packages for students which is of benefit to our students with special needs including autism. See the **LINKS** section for these websites.

Labour Market and Careers Links

<http://nationalcareers.service.gov.uk> Explore the A-Z of careers with skills assessments, job profiles, entry requirements and links to current opportunities. Contains information on a wide range of future study courses, apprenticeships and jobs.

www.totaljobs.com Job searching website

<https://Panjango.com> / [Panjango Online](#) Local website developed to showcase the jobs available at local employers in South Yorkshire. The online version is interactive with interesting challenges and great for secondary age students as an introduction to the world of work

<https://icould.com> Career videos and information- great for giving an insight into what it is like to do different jobs.

[Nomis - Official Census and Labour Market Statistics \(nomisweb.co.uk\)](#)

www.ons.gov.uk/employmentandlabourmarket These sites provide statistics on the labour market

Local colleges.

Rotherham College www.rotherham.ac.uk

Thomas Rotherham College www.trc.ac.uk

Barnsley College www.barnsley.ac.uk

Doncaster College www.doncaster.ac.uk

Rotherham Opportunities College – www.theroc.co.uk

Landmarks Specialist College- [Landmarks Specialist College](#)

Supported Employment

This is a useful route into employment for special needs students without GCSE qualifications. The following organisations support with this process.

Rotherham Opportunities College – www.theroc.co.uk

Landmarks Specialist College- [Landmarks Specialist College](#)

Project Search- [Home - DFN Project Search](#)

Employment is for Everyone- A networking group that can link to potential opportunities
<https://www.employmentisforeveryone.org.uk/>

Support and Information

<https://resources.careersandenterprise.co.uk/for/send> Library of Resources for SEND students

<https://www.ndti.org.uk/resources/preparing-for-adulthood-all-tools-resources/pfa-employment-resources>

ndti resources for employment support (as part of preparation for adulthood) – has vocational questionnaire

<https://www.rotherhamsendlocaloffer.org.uk/> A range of information and contacts to support young people with special educational needs, including health, money and travel.

<https://www.autism.org.uk/> Advice and support for people with autism

<https://www.jobcentreguide.co.uk/>

<https://jobhelp.campaign.gov.uk/looking-for-the-right-job/jobcentre-plus-support/> Help looking for work for young people

<https://www.gov.uk/universal-credit/what-youll-get> Universal Credit information

Learning links

[My Learning My Future: 'Careers Leader' Guide | CEC Resource Directory \(careersandenterprise.co.uk\)](#)

Set of resources links to jobs, college courses, apprenticeships linked to each national curriculum subject.

[My Skills My Future | CEC Resource Directory \(careersandenterprise.co.uk\)](#)

Full set of careers based resources and lessons for sen. Includes resources/videos on supported internships. Also contains section 'A day in the life of,' about different jobs/colleges/charities and 'Employer Projects' with activities to help understand different job sectors that sen students are likely to go into.